

CAMPGROUND RULES AND REGULATIONS:

The following campground rules apply to all campers and guests:

- Quiet time is 11:00 PM – 6:00 AM.
- No littering. Dispose of trash properly.
- Parents are responsible for their children at all times. Please do not leave children unattended.
- **Pets must be kept on a leash at all times** and no excessive barking. Please clean up after your pet and **do not leave pets unattended.**
- No music or TV's should be heard beyond your site. **No loud gatherings or parties.**
- Park vehicles in designated areas only. Road parking leave two wheels on pavement.
- No moving picnic tables to other campsites.
- No smoking in restrooms or bathhouses. No pets in restrooms or bathhouses.
- No defacing signs, buildings, or any other structures in the park.
- Fires must be in the fire rings provided. Never leave a fire unattended and extinguish fires before turning in for the night or leaving the campground.
- No firewood may be brought from outside the park. No cutting down trees or plants. Firewood is available for sale at the Ranger Station
- No alcoholic beverages or glass bottles.
- No hunting. Firearms and fireworks are prohibited in campground.

RESERVATIONS PAYMENT/CANCELLATION/CHANGE POLICY:

- All reservations require 100% payment at the time of booking.
- Refunds due to inclement weather will not be issued.
- No refunds for early departures unless necessary for medical reasons.
- **No refunds will be given for cancellations on holiday or special event weekends. All other reservation cancellations require 48-hour notice. (By 3:00 pm 2 days before)**
- A \$10 fee (per site reserved) is non-refundable for all cancellations regardless of when the cancellation is done to cover processing fees.

MAJOR ATTRACTIONS NEAR THE PARK:

- Ark Encounter – 48 minutes – 31.6 miles
- BB Riverboats – 32 minutes – 18.9 miles
- Creation Museum – 39 minutes – 32.6 miles
- Cincinnati Museum Center – 32 minutes – 20.8 miles
- Cincinnati Reds – 29 minutes – 19.2 miles
- Cincinnati Zoo – 34 minutes – 22.3 miles
- Freedom Center – 30 minutes – 19.1 miles
- Jack Cincinnati Casino – 30 minutes – 19.3 miles
- KY Speedway – 58 minutes – 45 miles
- Mainstrasse Village – 33 minutes – 20.7 miles
- Newport Aquarium – 31 minutes – 18.8 miles
- Newport on the Levee – 31 minutes – 18.8 miles
- New Riff Distilling – 30 minutes – 17.8 miles



<https://www.meetNKY.com>



Campbell County
A.J. JOLLY PARK

Campground Map and Information



Ranger Station: 859-635-4423

Park Manager: 859-547-3681

Emergencies: Dial 911

1501 Race Track Road, Alexandria, KY 41001

Check-in time is 3 pm ~ Check-out time is 11 am

Reservations will be confirmed upon full deposit

*Fri/Sat night stay required for festival weekends;

** Fri/Sat/Sun night stay required for holiday weekends (Mon. holiday)

Same day camping is welcome based on availability

We accept cash, check, Visa, Mastercard or Discover

Campbell County Parks and Recreation is not responsible for theft of camping equipment or contents, nor for any damage caused by natural causes.

All activities in the campground are done at your own risk and we are not responsible for injury to campers, guests or for loss of money/valuables of any kind.

Campgrounds are patrolled by Park Rangers and Campbell County Police.

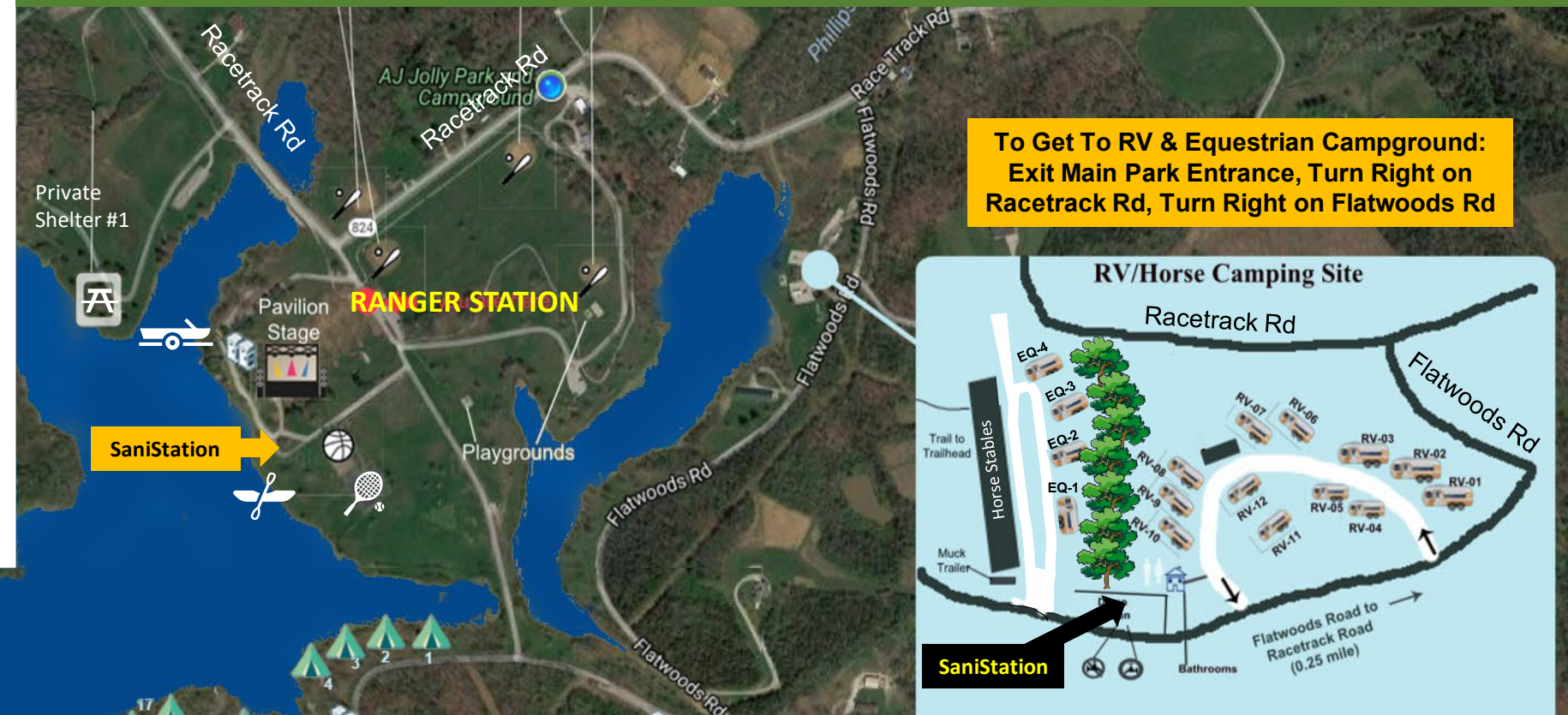
IMPROVED SITES — 20-46 (limited to one vehicle per site)

Improved sites have asphalt pads with water, 20/30 amp electric service, picnic table and fire ring; no sewer hookups. **This area is best suited for pop-ups/small campers due to tight turning radius.**

Size of site is below: (total size for camper and or vehicles)

Site 20	50+ ft.	Site 34	35 ft. (lake front)
Site 21	40+ ft.	Site 35	35 ft. (near lake on incline)
Site 22	50+ ft.	Site 36	35 ft. (near lake on incline)
Site 23	45 ft. (lake front)	Site 37*	30 ft. *no electric or water
Site 24	28 ft. (lake front/has bench)	Site 38*	40 ft. (need long electric cord/water hose)
Site 25	30 ft.	Site 39	40 ft.
Site 26	30 ft.	Site 40	45 ft.
Site 27	28 ft.	Site 41	50+ ft.
Site 28	28 ft.	Site 42	30-35 ft.
Site 29	38 ft.	Site 43	30 ft. (small site)
Site 30	38 ft. (lake front/on incline)	Site 44	30 ft. (top of hill)
Site 31	45 ft.	Site 45	30 ft. (top of hill, need long electric cord)
Site 32	45 ft. (lake front)	Site 46	50 ft. (large site)
Site 33	20 ft. (lake front/tents/pop-ups only)		

A.J. Jolly Park and Campground 1501 Race Track Road, Alexandria, KY 41001



**To Get To RV & Equestrian Campground:
Exit Main Park Entrance, Turn Right on
Racetrack Rd, Turn Right on Flatwoods Rd**



EQ CAMPGROUND — EQ1-EQ4
Off Flatwoods Road by Horse Stables. Water and electric.

PRIMITIVE SITES — 1-7, 12-18, 47-71
All primitive sites are grass and gravel with one picnic table and fire ring; no water, electric or port-a-lets. ***Limited to 7-night stay.**
Sites 1, 2, 3, 14, 17, 18, H3, 54, 55-69, 71 – Grills provided on-site
Sites 5, 6, 7, 12, 13, 14 & 15 – Can be booked for group camping
Sites H1, H2, H3, Y1, & Y2 - On hill above bathroom
Site 16 – Handicap (has bench/dock & port-a-john for public use)
Sites Y1 & Y2 – “The Yurts” are fully furnished with electric
Site 49 – “The Point” near the lake
Site 54, 55 & 56 – Steep hill to site, near the lake
Site 64 – Cove, opposite side of the road from the lake
Site 65 – Huge site, opposite side of road from the lake
Site 66 – Huge site on point, rock fire ring
Site 67 & 68 – On cove, small sites
Site 69 & 70 – Very hilly
Site 71 – Huge site, across road from lake, public port-a-john

RV CAMPGROUND — RV1-RV12
Off Flatwoods Road. Large, level gravel sites with water and 20/30/50 amp electric, fire ring; no sewer hookups. Equestrian stables available for horses (horses cannot stay in campground overnight). One picnic table per site on concrete pad. Campground has picnic shelter and playground equipment.