

NORTHERN KENTUCKY MASS CASUALTY INCIDENT (MCI) MANAGEMENT PLAN TACTICAL WORKSHEET

COMPLETE

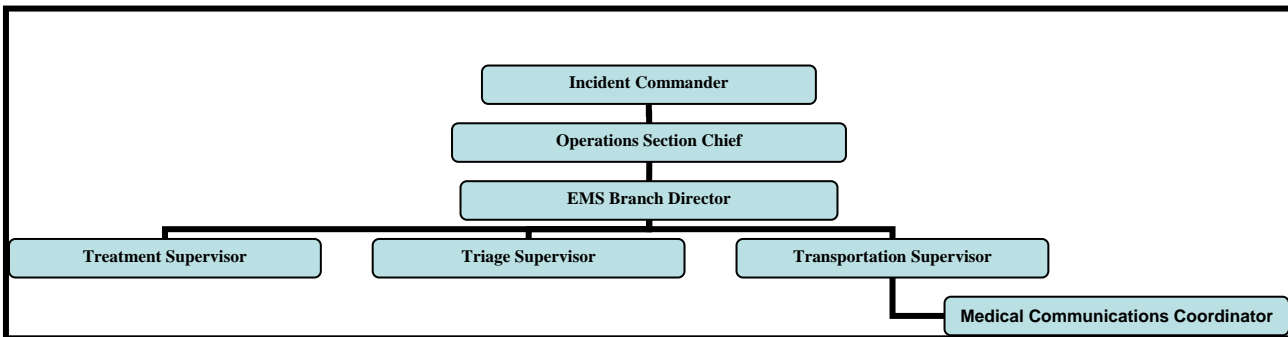
Activate NKY MCI Management Plan through dispatch = MCI ALERT

Establish Unified Incident Command post

Determine resource needs and request appropriate MCI Alarm Level:

- **First Alarm: 5 Ambulances, 3 Engines, 1 Rescue, 2 Chief Officers, EMA, MCI Trailer, Command 100**
- **Second Alarm: *in addition to 1st alarm* 10 Ambulances, 8 Engines, 2 Rescue, 3 Chief Officers, Next County MCI Trailer, Next County EMA**
- **Third Alarm: * in addition to 1st and 2nd alarms* 10 Ambulances, 10 Engines, 1 Rescue, 3 Chief Officers, 3rd County EMA**
- **Fourth Alarm: *in addition to 1st, 2nd and 3rd alarms* 10 Ambulances, 10 Engines, 3 Chief Officers, 3rd County MCI Trailer**
- **Fifth Alarm: *in addition to 1st, 2nd, 3rd and 4th alarms* 25 additional ambulances**

Assign ICS positions and distribute corresponding vests, distribute the NKY MCI Plan checklists and forms:



Work with Law Enforcement to initiate scene access control. If necessary establish hot /warm/cold zones.

Ensure activation of the Hamilton County Disaster Council Radio by calling Hamilton County Communications at (513) 825-2260 Network (this will initiate a hospital bed count) The Medical Communications Coordinator should initiate use of the Hospital Capability and Patient Tally Sheet

Consider need for Red Cross Medical Assistance Team (MAT), air medical assets, private ambulances, TANK or School bus(es) for “walking wounded”.	
Consult with the IC to determine if it is safe to initiate triage using the START method. Use triage packs and ribbons initially.	
Advise all personnel to exercise care not to disturb potential evidence on the scene unless necessary for rescue operations.	
Establish a Treatment Area – ensure sufficient space for expansion, provide for ingress and egress of ambulances, upwind and uphill from incident. Make sure all patients receive secondary triage and tags are applied as they arrive in treatment area. Treatment Supervisor should initiate use of the Treatment Area Log.	
Establish a Staging Area and a Staging Officer to coordinate the arrival and deployment of responding units. (Use a staging area predetermined in the NKY MCI Plan or if necessary chose an alternate location) Initiate the use of the EMS Staging Log	
If there are fatalities have dispatch notify the County Coroner (do not move the deceased from the incident site)	
When initial triage is completed perform a secondary search checking all areas around the scene for potential patients including walk-aways, ejections, etc.	

Revised - 07/2010