

EMERGENCY SUPPORT FUNCTION #1 - TRANSPORTATION

PRIMARY

ESF 1 Coordinator

(P)Campbell County Schools (Todd Colvin) Transportation Director

(S) Campbell County Transportation Department (Ken Schultz) Transportation Director

LOCAL SUPPORT*

Chief Elected Officials

Local and County Law Enforcement Agencies

Local Businesses

Local Schools Transportation Departments

Public Works Departments City and County

Local Fire/EMS Departments

SAR Teams

Ambulance Services

Campbell County PVA

LOCAL RESOURCE*

Northern Kentucky Independent Health District

CSX Railway

Public Transit Services

Northern Kentucky Area Planning

STATE RESOURCE*

Kentucky Division of Emergency Management

KYTC District Office

American Red Cross, Kentucky/ Ohio Chapters

Volunteer Organizations Active in Disaster Coordinator

Civil Air Patrol

** Note. Individual resources are listed in the ERIL*

PURPOSE

To establish procedures for using transportation resources in response and recovery efforts during an incident, including but not limited to; transportation for evacuees. Transportation support entails utilizing and/or providing land, air, rail, watercrafts, or other resources for emergency response or assistance operations, as well as coordinating resources to facilitate an effective, efficient and appropriate response/support.

SITUATIONS AND ASSUMPTIONS

An incident may cause extensive damage to the County and/or surrounding jurisdictions, requiring activation of the County's transportation assets in support of coordinated response activities.

Movement of resources into and evacuees out of the impacted area will be predicated on and require the identification of all surviving and available methods and routes of transportation.

Damaged roads, vehicles, facilities, equipment and damaged or disrupted communications could significantly hamper emergency transportation support.

Emergency transportation support requirements will likely exceed local capabilities and outside assistance will be required and must be planned for to support local emergency operations and/or a large-scale evacuation.

The general public will receive and understand official emergency public information and warning related to evacuation.

The majority of the public will act on its own and evacuate areas promptly when advised to do so.

Some people may refuse to evacuate regardless of warnings.

Most evacuees will seek shelter with relatives or friends rather than accept public shelter.

The principal mode of transportation for evacuees will be private vehicles.

Some people will lack transportation.

Some residents that are ill or disabled may require vehicles with special transportation capabilities.

Institutional residents will be evacuated by the organization responsible for the institution, e.g., local hospitals, county jails, assisted living quarters, schools, daycare centers, etc., or the institution will make prior arrangements to have the residents evacuated, when required.

Certain areas of the county, or special populations within the county, may need additional time to accomplish an evacuation.

It may take several days to complete a mass evacuation out of the county.

County roads and highways will become congested during a large-scale evacuation and hamper the movement of traffic and access for emergency vehicles.

Local and County Law Enforcement will provide the majority of traffic control on major evacuation routes within the County.

MISSION

To coordinate and organize transportation resources for Local and County agencies in preparing for, responding to and recovering from incidents which impact the citizens of the County.

DIRECTION AND CONTROL

The ESF 1 Coordinator is responsible for the planning and implementation of ESF 1 activities. Transportation resources within the County are coordinated through the County Emergency Operations Center and the ESF 1 Coordinator.

The ESF 1 Coordinator will:

- Provide/utilize resources or personnel that aid traffic control, relocation and evacuation efforts.
- Assign airport representative to monitor restricted airspace and airport accessibility.
- Coordinate damage assessments and inspections of transportation infrastructure.
- Coordinate transportation for patients and/or medical personnel and equipment or supplies.
- Maintain a record of location and type of transportation resources stored and a running inventory at each facility.
- Coordinate restoration or replenishment of critical transportation infrastructure or resources.

County Emergency Operations Center (EOC)

- The ESF 1 Coordinator will coordinate with other agencies' ESF 1 to provide the Chief Elected Official or Emergency Management (EM) Director with the necessary staff, facilities, and equipment for an appropriate response in emergency operations.
- The ESF 1 Coordinator will assume administrative control and responsibility to receive, evaluate, coordinate, prepare and distribute transportation responses for incidents within the County.
- Transportation for any large evacuation of local citizens or reception of citizens of another county will be coordinated with staging areas assigned.
- At the time of an incident demanding an evacuation, estimates will be made of the people with special needs requiring transportation, staging points, central pick up spots, and refueling points.
- Depending on the incident, transportation of pets or other animals may need to be coordinated.

CONCEPT OF OPERATIONS

The responsibility for the operation of the transportation service is divided into two distinct areas consisting of government and industry.

- The ESF 1 Coordinator has the responsibility for directing, controlling and coordinating all transportation, transportation facilities and resources and establishing procedures for meeting the transportation industry needs. The Coordinator also determines

transportation requirements by establishing priorities and coordinating with adjoining counties in the joint use of transportation.

- All requests for transportation will be made to the County ESF 1 Coordinator. If the ESF 1 Coordinator is unable to supply the requested transportation, then the Coordinator will request assistance from the State EOC.
- Transportation not allotted by the ESF 1 Coordinator will remain the responsibility of the owner.
- Transportation for any large evacuation of local citizens or reception of citizens of another county and assignment of staging areas will be coordinated through the ESF 1 Coordinator.
- At the time of an incident demanding an evacuation, estimates will be made of the people with special needs requiring transportation, staging points, central pick up spots, and refueling points.
- Snow and ice emergencies can seriously disrupt local, state or federal highways. When a snow or ice storm warning is issued for the county by the National Weather Service, Winter Storm Transportation Actions will be implemented.

Phases of Management

Preparedness

- Review and update disaster procedures as they relate to ESF 1 activities.
- Monitor and manage the development and operation of transportation systems for the County Emergency Operations Center.
- Prepare and maintain current list of personnel, equipment and their locations needed to carry out responsibilities as assigned under ESF 1.
- Develop Continuity of Operations Plans (COOP) for ESF 1 to ensure uninterrupted operations during disasters.
- Prepare and maintain ESF administrative and financial procedures as required to properly document activities of the ESF during activations.
- Develop and maintain standing contracts and mutual aid agreements that allow for an equipment surge to meet the demands of evacuation transportation needs during disasters and restoring transportation infrastructure that has been damaged.

Response

- Activate the ESF 1 Coordinator when requested by the County Emergency Management or State Emergency Operations Center (SEOC).
- Provide ESF 1 Coordinator to the County EOC to support Transportation requests.
- Activate contracts that allow for an equipment surge to meet the demands of evacuation transportation needs during disasters and maintaining and re-establishing transportation infrastructure that has been damaged.
- Emergency Equipment Rental - Emergency equipment rental includes equipment needed for snow and ice removal, flood relief work and other natural disaster work. It would include slip and slide work where it is of the magnitude that would stop traffic or cause an intolerable delay to the motorist. Emergency equipment rental shall be accomplished in accordance with emergency purchase regulations and procedures established by the Chief Elected Official(s), County Finance Officer and/or County Fiscal Court or City Officials. Requests for mutual aid and assistance shall be submitted in accordance with the Kentucky Statewide Emergency Management Mutual Aid and Assistance Agreement.

Recovery

- Provide ESF 1 coordination and support as required for Recovery Operations.
- Coordinate assistance to Local governments in the removal of debris and the restoration of transportation infrastructure as required.
- Conduct internal After Action Reviews (AAR) and document lessons learned and recommendations for improvement of Emergency Operations Plans, Procedures and Guidelines.
- Priority shall be given to those maintenance repairs of an urgent nature on the more heavily traveled roads and to proceed as rapidly as possible to get patching completed and the road surface restored. Roads to be repaired first by maintenance crews are those carrying the greatest volume of high-speed traffic. Repair work will follow as quickly as possible on all other roads.

Special Populations

- **Hospitals**

The only hospital in Campbell County is St. Elizabeth in Ft. Thomas. St Elizabeth Ft. Thomas is the primary urgent care facility in the County. In addition to the local EMS Services Transcare, Rural Metro and Med Corp service this location. Evacuation plans are in place for the facility including transportation resources to support the plans

- **Disabled**

The Counties northern section is home to numerous nursing homes. The facilities are serviced by the local EMS service for emergency calls and Transcare, Rural Metro and Med Corp for transport runs. Each facility has a current evacuation plan and had identified transportation resources to support the plan.

- **Schools**

All Schools districts have access to transportation and have transportation plans in place

- **Jails/Prisons**

The Campbell County Detention Center has limited transportation capabilities and would require assistance from Campbell County to transport its population and staff to appropriate receiving facilities

- **Children's Homes**

The County is Host to two Children's homes. Campbell Lodge in the central portion of the county and Holly Hill in the southeastern portion of the county. Both facilities have very limited transportation capabilities and would need Campbell County to assist in transportation. Both facilities have a transportation plan in place identifying transportation resources

ORGANIZATION AND ASSIGNMENT OF RESPONSIBILITIES

The ESF 1 Coordinator will identify and coordinate local, state and federal agencies to repair and restore access into the disaster area(s), with priority for repairs/restoration given to those more heavily traveled roads and to proceed as rapidly as possible.

GENERAL ORGANIZATION RESPONSIBILITIES

Operational control remains the same during emergency situations as during normal activities; however, operations may require 24-hour coverage, and a central point of overall coordination. The ESF 1 Coordinator must be prepared to assist in lengthy operations that start in response and continue through recovery and involve clean up activities and return of resources.

SPECIFIC KEY POSITION RESPONSIBILITIES

Primary – ESF 1 Coordinator:

- Is responsible for the assignment of ESF 1 Coordinator to the State EOC ESF 1 as described in the State Response Plan, when required.
- Has primary responsibility for providing and assigning emergency transportation resources to requesting organizations and coordinating their operations as directed through the County EOC and for the maintenance and repair of primary transportation infrastructure throughout the County.

- Is responsible for developing and maintaining Standard Operating Procedures for ESF 1.

Support

- Supporting Agencies will provide information and resources as required by the ESF 1 Coordinator to ensure the proper functioning of ESF 1.
- Supporting Agencies will ensure their representatives to ESF 1 are properly trained and exercised on the plans and procedures relating to their work.

Specific Agency Duties:**Chief Elected Official**

- Responsible for emergency operations within their jurisdiction

Law Enforcement:

- Responsible for maintaining law and order, protecting life and property, providing traffic control, guard essential facilities and supplies, and coordinate state-wide law enforcement mutual aid.

Local Businesses

- Industry assumes responsibility for protecting employees, supplies and private facilities. Businesses may provide support and services to local government, as needed.

Board of Education (transportation departments)

- Board of Education assumes responsibility for protection of students, staff, equipment and facilities, as well as the safe transportation of students.
- The Board of Education will develop and maintain a database of available transportation resources owned and maintained by the district.
- In the event that these assets are required, the Board of Education will assist in accessing and utilizing these resources for emergency transportation needs.

Road/Street Dept.

- Responsible for clearing and maintaining local streets and roads.

Fire/Rescue Departments

- Will respond to fire or other situations affecting the health and safety of the citizens.

Transit Services

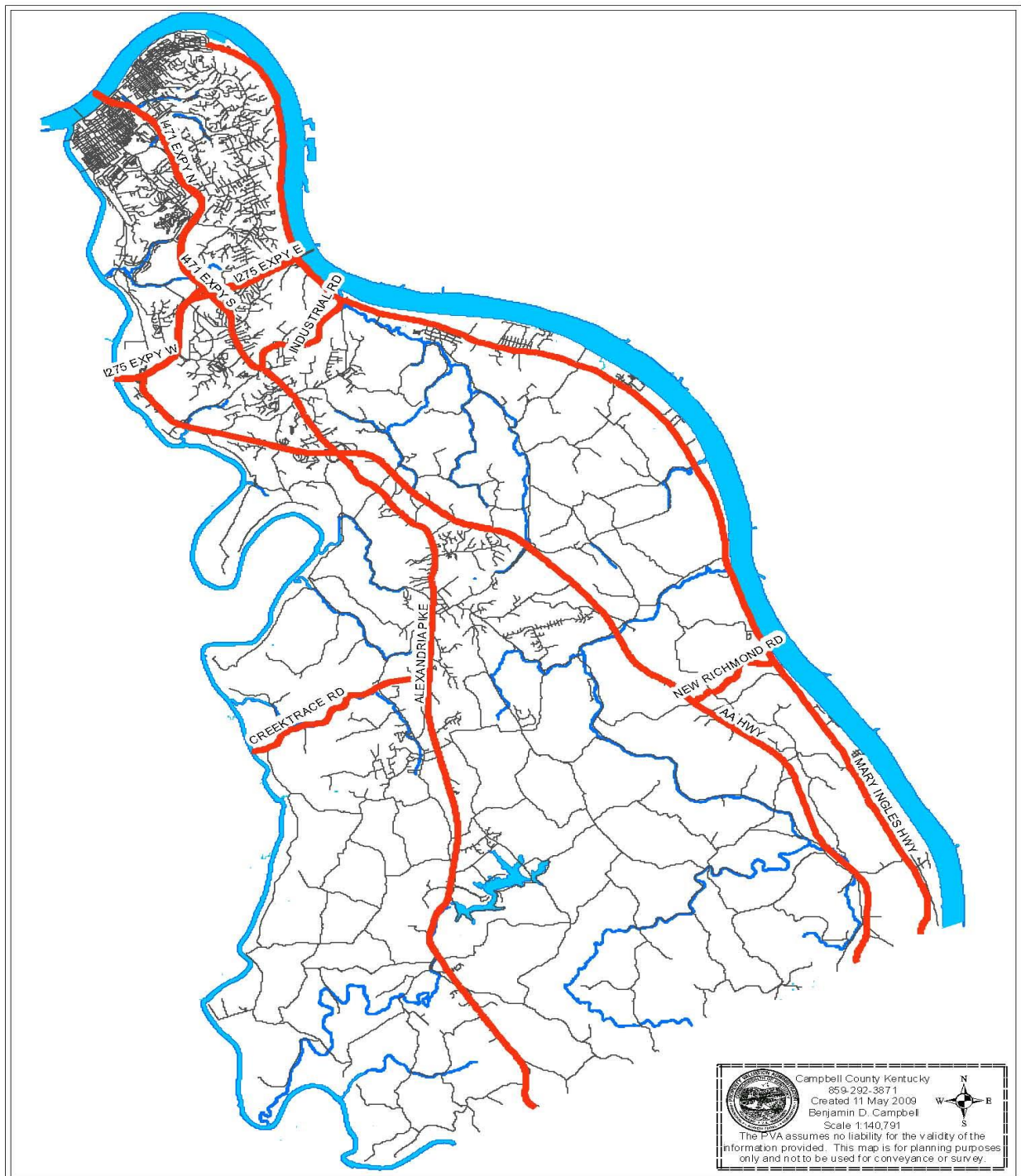
- Responsible for establishing and maintaining public transportation and resources.
- In the event that these assets are required, the Transit Service will assist in accessing and utilizing these resources for emergency transportation needs.

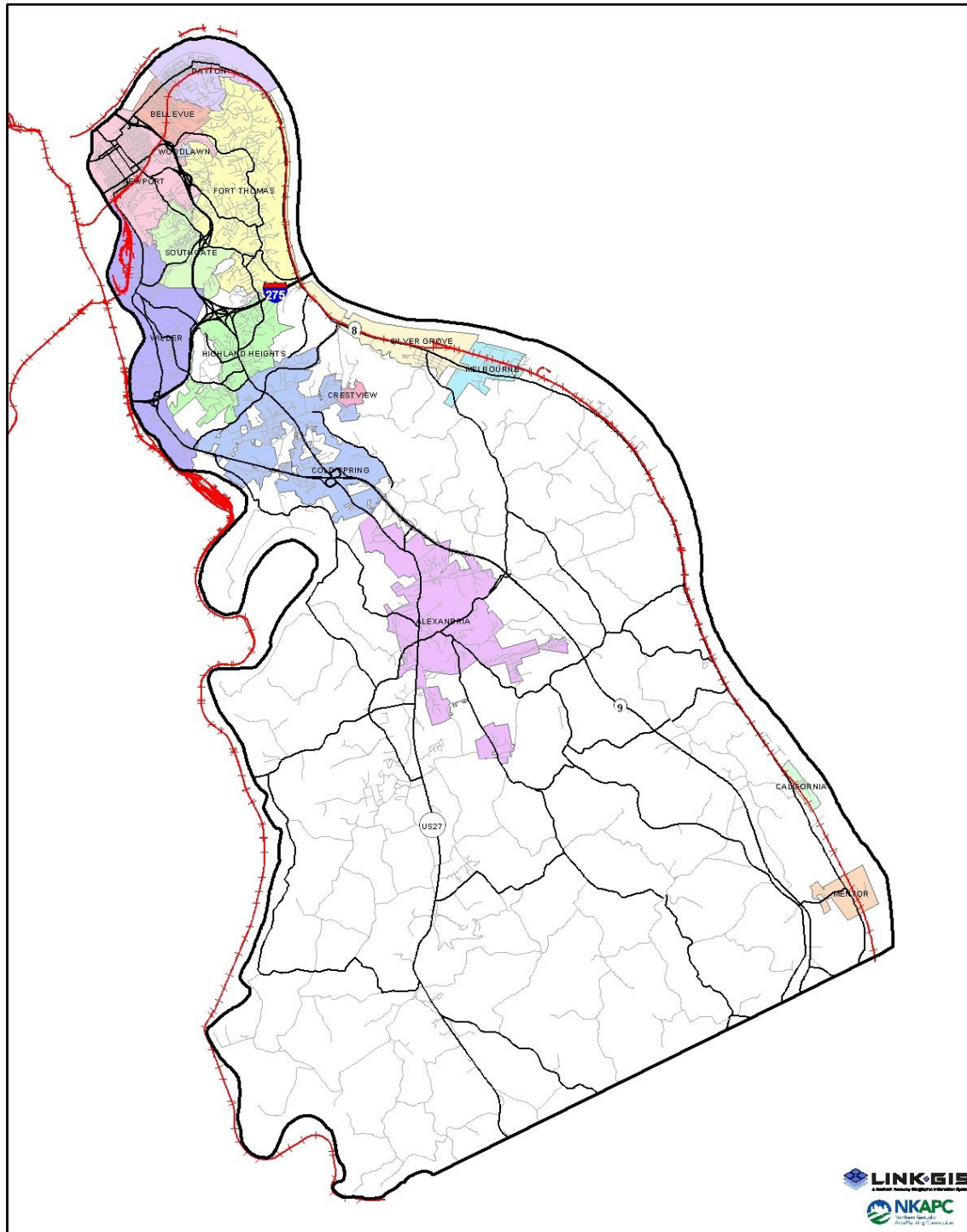
SAR Teams (Land and Water)

- Responsible for assisting agencies with specialized resources to aid in the rescue and or recovery disaster victims

Ambulance Services

- Responsible for treatment and/or transportation of sick or injured persons in need of medical attention.
- In the event that these resources are required, the Ambulance Service will assist in utilizing these resources for emergency transportation for persons with special needs.

MAPS Major Evacuation Routes.

MAPS Rail Road lines.

REFERENCES

KRS 39A-G

The National Response Framework

The National Incident Management System

Campbell County PVA GIS system

Northern Kentucky Area Planning

