

CAMPGROUND RULES AND REGULATIONS:

The following campground rules apply to all campers and guests:

- Quiet time is 11:00 PM – 6:00 AM.
- No littering. Dispose of trash properly.
- Parents are responsible for their children at all times. Please do not leave children unattended.
- **Pets must be kept on a leash at all times** and no excessive barking. Please clean up after your pet and **do not leave pets unattended.**
- **Portable Toilets/Privacy Tents are Prohibited.**
- No music or TV's should be heard beyond your site. **No loud gatherings or parties.**
- Park vehicles in designated areas only. Road parking leave two wheels on pavement.
- No moving picnic tables to other campsites.
- No smoking in restrooms or bathhouses. No pets in restrooms or bathhouses.
- No defacing signs, buildings, or any other structures in the park.
- Fires must be in the fire rings provided. Never leave a fire unattended and extinguish fires before turning in for the night or leaving the campground.
- No firewood may be brought from outside the park. No cutting down trees or plants. Firewood is available for sale at the Ranger Station
- No alcoholic beverages or glass bottles.
- No hunting. Firearms and fireworks are prohibited in campground.
- Lake swimming is Prohibited.
- No Pets in Yurts. No Smoking in Yurts.
- Non-Licensed Motor Vehicles are Prohibited (Including golf carts, ATV's).

RESERVATIONS PAYMENT/CANCELLATION/CHANGE POLICY:

- All reservations require 100% payment at the time of booking.
- Refunds due to inclement weather will not be issued.
- No refunds for early departures unless necessary for medical emergency.
- **No refunds will be given for cancellations on holiday or special event weekends. All other reservation cancellations require 48-hour notice from the date of check-in (i.e. Friday reservation must be cancelled by Tuesday).**
- A \$10 fee (per site reserved) is non-refundable for all cancellations regardless of when the cancellation is done to cover processing fees.

MAJOR ATTRACTIONS NEAR THE PARK:

- Ark Encounter – 48 min – 31.6 miles
- BB Riverboats – 32 min – 18.9 miles
- Creation Museum – 39 min – 32.6 miles
- Cincinnati Museum Center – 32 min – 20.8 miles
- Cincinnati Reds – 29 min – 19.2 miles
- Cincinnati Zoo – 34 min – 22.3 miles
- Freedom Center – 30 min – 19.1 miles
- Hard Rock Casino – 30 min – 19.3 miles
- KY Speedway – 58 min – 45 miles
- Mainstrasse Village – 33 min – 20.7 miles
- Newport Aquarium – 31 min – 18.8 miles
- Newport on the Levee – 31 min – 18.8 miles
- New Riff Distilling – 30 min – 17.8 miles



- Coney Island Park – 26 min – 15.9 miles
- American Sign Museum – 34 min – 23 miles
- Belterra Park Racino – 26 min – 16.3 miles
- Turfway Park – 30 min – 22.4 miles
- Smale Riverfront Park – 28 min – 18.9 miles
- Seven Wells Winery – 7 min – 3.8 miles
- Stonebrook Winery – 21 min – 11.5 miles
- Old Pogue Distillery – 52 min – 44.8 miles



Campbell County
A.J. JOLLY PARK

Campground Map and Information



Ranger Station: 859-635-4423

Park Manager: 859-547-3681

Emergencies: Dial 911

1501 Race Track Road, Alexandria, KY 41001

Check-in time is 3 pm ~ Check-out time is 11 am

Reservations will be confirmed upon full deposit

*Fri/Sat night stay required for festival weekends;

** Fri/Sat/Sun night stay required for holiday weekends (Mon. holiday)

Same day camping is welcome based on availability

We accept cash, check, Visa, MC, Discover or American Express

Campbell County Parks and Recreation is not responsible for theft of camping equipment or contents, nor for any damage caused by natural causes.

All activities in the campground are done at your own risk and we are not responsible for injury to campers, guests or for loss of money/valuables of any kind.

Campgrounds are patrolled by Park Rangers and Campbell County Police.

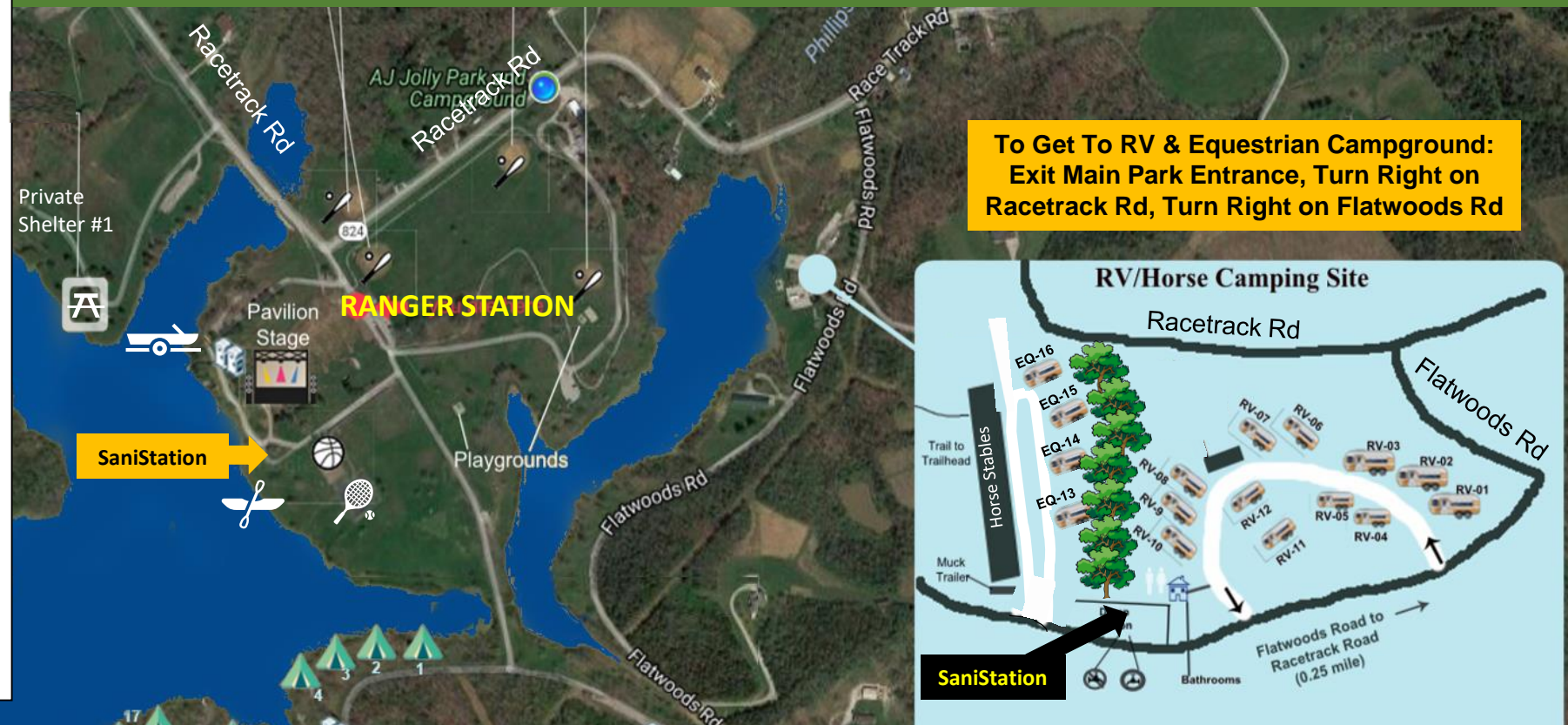
RV SITES — 20-53 (limited to one vehicle per site)

Improved sites have asphalt pads with water, 20/30 amp electric service, picnic table and fire ring; no sewer hookups. Sites 20-46 best suited for pop-ups/small campers due to tight turning radius.

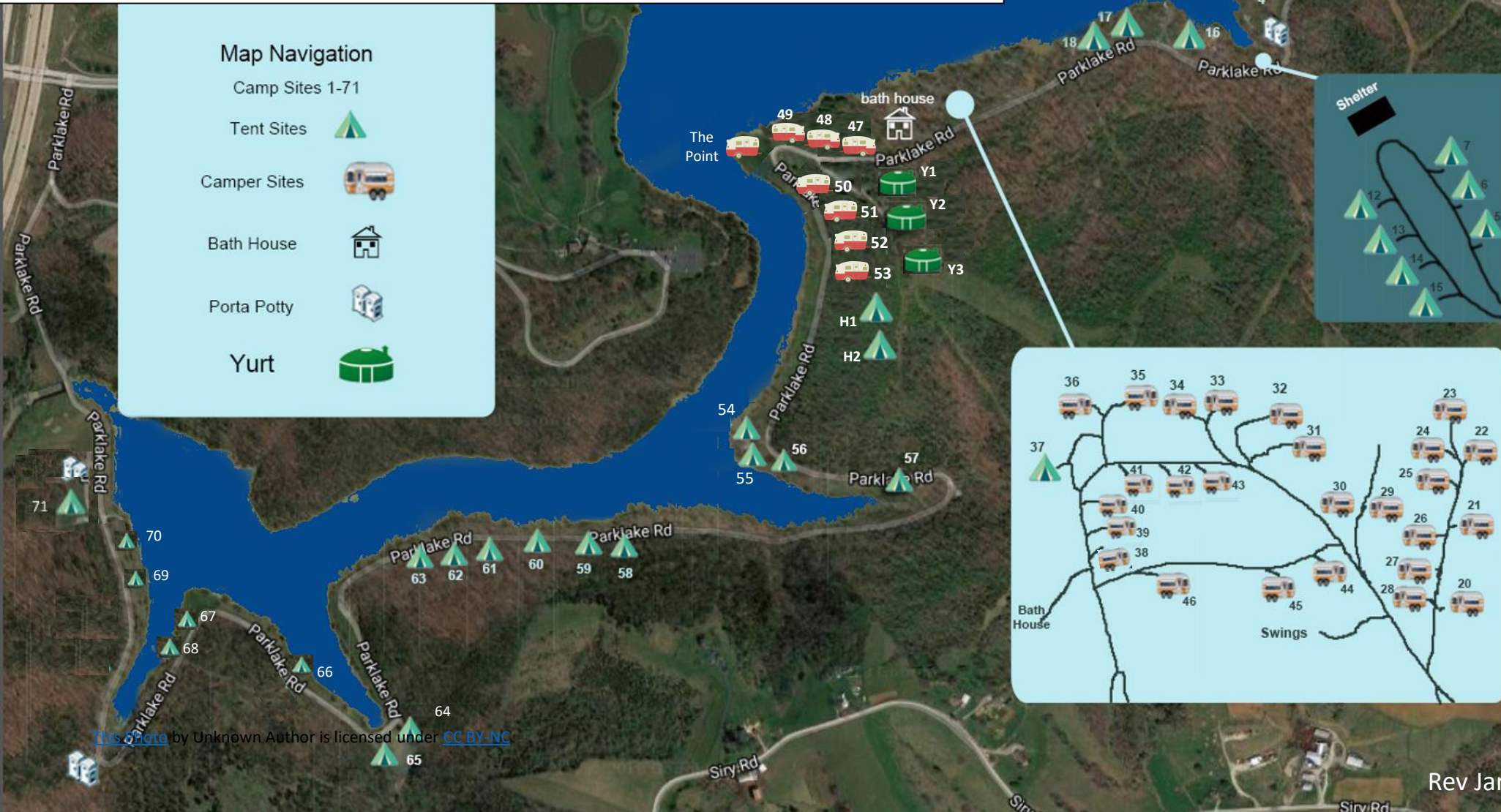
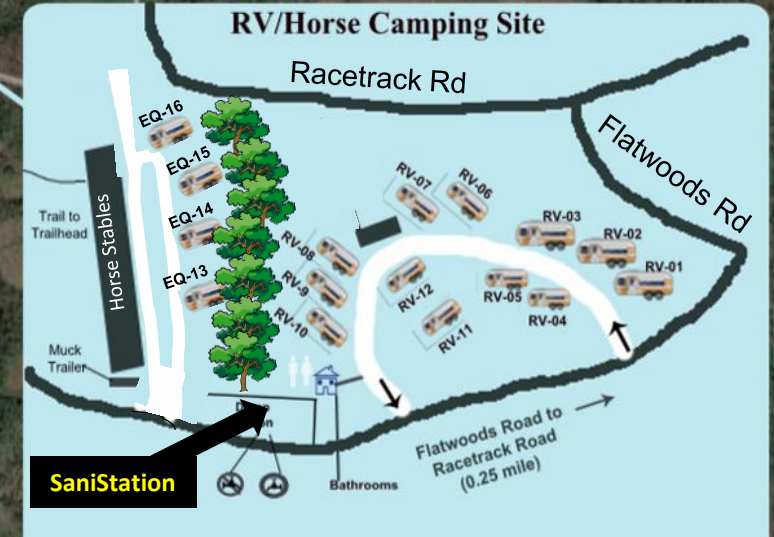
Size of site is below: (total size for camper and/or vehicles)

Site 20	30 ft.	Site 37*	30 ft. *no electric or water
Site 21	23 ft.	Site 38*	28 ft. (need long water hose)
Site 22	23 ft.	Site 39	28 ft.
Site 23	23 ft. (lake front)	Site 40	28 ft.
Site 24	20 ft. (lake front with bench)	Site 41	28 ft.
Site 25	20 ft.	Site 42	26 ft.
Site 26	20 ft.	Site 43	26 ft. (small site)
Site 27	20 ft.	Site 44	21 ft. (top of hill)
Site 28	20 ft.	Site 45	19 ft. (top of hill, need long electric cord)
Site 29	23 ft.	Site 46	28 ft. (large site)
Site 30	23 ft. (lake front on incline)	Site 47	35 ft. 20/30/50 amp service
Site 31	28 ft.	Site 48	35 ft. 20/30/50 amp service
Site 32	28 ft. (lake front)	Site 49	35 ft. 20/30/50 amp service
Site 33	16 ft. (tents/pop-ups only)	Site 50	35 ft. 20/30/50 amp service
Site 34	20 ft. (lake front)	Site 51	35 ft. 20/30/50 amp service
Site 35	28 ft. (near lake on incline)	Site 52	35 ft. 20/30/50 amp service
Site 36	28 ft. (near lake on incline)	Site 53	28 ft. 20/30/50 amp service
		THE POINT	- 35 ft. 20/30/50 amp service

A.J. Jolly Park and Campground 1501 Race Track Road, Alexandria, KY 41001



To Get To RV & Equestrian Campground:
Exit Main Park Entrance, Turn Right on
Racetrack Rd, Turn Right on Flatwoods Rd



PRIMITIVE SITES — 1-7, 12-15

Grass and gravel with one picnic table and fire ring; water and electric. Sites are level, but can only accommodate pop-ups/van campers/very small campers. ***Limited to 7-night stay.**
Sites 5, 6, 7, 12, 13, 14 and 15 – Can be booked for group camping

PRIMITIVE SITES — 16, 17, 18, 54-71, H1, H2, Y1, Y2, Y3

All primitive sites are grass and gravel with one picnic table and fire ring; no water, electric or port-a-lets. ***Limited to 7-night stay.**
Site 16 – Handicap (has bench/dock & port-a-john for public use)
Sites 17, 18, 54, 55-69, 71 – Grills provided on-site
Sites H1 & H2 - On hill above bathroom
Sites Y1, Y2 & Y3 – “The Yurts” are fully furnished **with electric**
Site 54, 55 & 56 – Steep hill to site, near the lake
Site 64 – Cove, opposite side of the road from the lake
Site 65 – Huge site, opposite side of road from the lake
Site 66 – Huge site on point, rock fire ring
Site 67 & 68 – On cove, small sites
Site 69 & 70 – Very hilly
Site 71 – Huge site, across road from lake, public port-a-john

EQ CAMPGROUND — EQ13 - EQ16

Off Flatwoods Road by Horse Stables. Water and electric.

RV CAMPGROUND — RV1 - RV12

Off Flatwoods Road. Large, level gravel sites with water and 20/30/50 amp electric, fire ring; no sewer hookups. Equestrian stables available for horses (horses cannot stay in campground overnight). One picnic table per site on concrete pad. Campground has picnic shelter and playground equipment.